

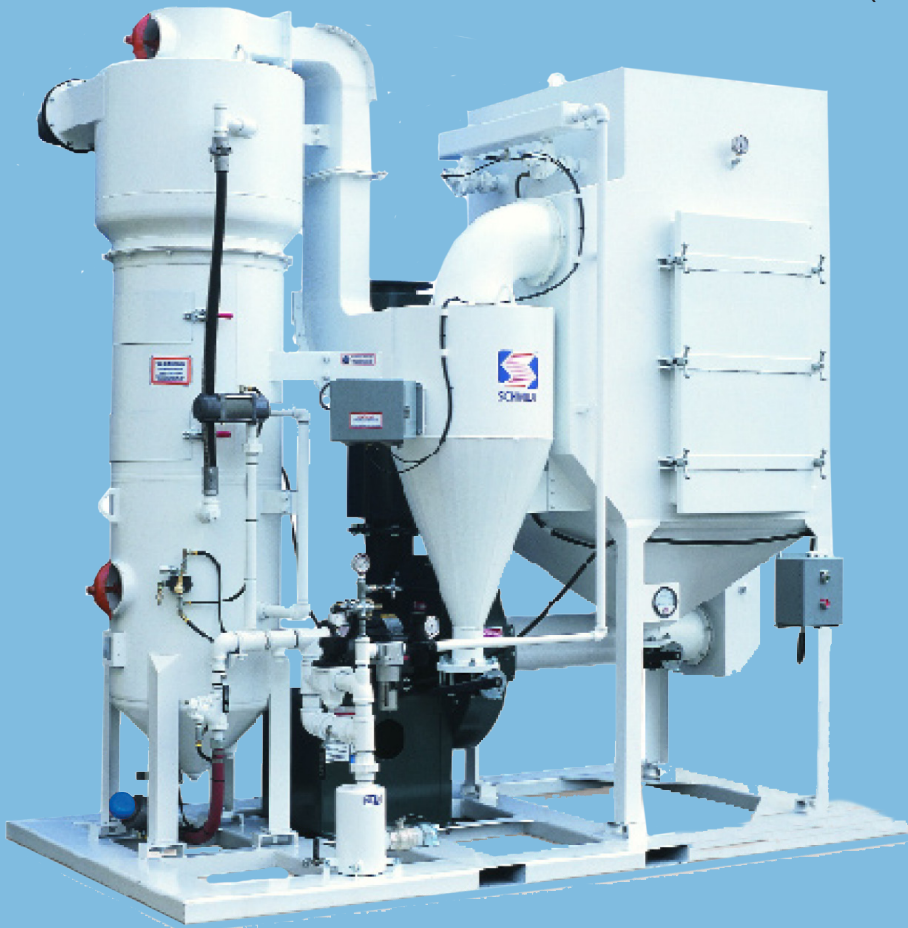


Blast and Recovery System



IBRS

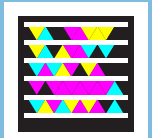
(Industrial Blast & Recovery System)



- Features Schmidt TVII and ComboValve
- Optional High Flow Auto Air Valve for large nozzle applications
- Moisture separator and media vibrator ensure even consistent flow of abrasive
- Optional high efficiency secondary cyclone extends dust collector filter life
- Cartridge style dust collector with automatic pulse jet to minimize clogging of filter
- Custom systems available
- Optional floor trough system available

The Schmidt Industrial Blast and Recovery system is designed to meet the needs of industrial blasting operations. This flexible system offers an affordable alternative to traditional blast rooms. A wide range of available vessel sizes allows for multiple operators and high productivity.

Convert Your Room into a Blast Room



Pressure Vessel

6.5 CF 24" dia. ASME Sect VIII coded pressure vessel rated for 150 psig
Standard Schmidt 3¾" dia. pop-up with spider
90° cone bottom, 6" x 8" Handway
(2) Two outlet capability



Blast Controls

(1) 1½" Thompson Valve II metering (polyurethane sleeve)
(1) 1¼" Union end ball valve
G2 Pneumatic deadman controls with 55' twinline
Manual Blowdown
High Flow AAV for greater productivity
1½" small pot moisture trap



Hopper

24" dia. 6.5 CF above pressure vessel
Access door(s) at top and bottom for screen and pop-up
Vibrating screen with 1/4" perforation
High level sight glass

Reclaimer

24" dia. cyclonic design
Adjustable air wash
Wear resistant material or liner

Dust Collector

Two cartridge design (2 paper filters included)
Dual doors for easy access to cartridges
Automatic 120VAC pulse controls with (2)
Goyen pulse valves
Magnahelic gage for filter sensing
1000 CFM @ 32" WC 10HP Electric
Blower 460 or 230/3PH/60 Hz
Hi-attenuation blower silencer (approx. 85dB)

Miscellaneous Features

Skid mounted with side fork pockets
Standard Schmidt blast, prime and paint white
25' of 6" vacuum hose included

Options Available

Additional Thompson Valve II pneumatic outlet
Secondary cyclone separator
800 CFM moisture separator
Tungsten Carbide sleeve
Union end ball valve
Electric controls (per outlet) (specify voltage)
Remote abrasive cutoff *Pneumatic*
Remote abrasive cutoff *Electric*
ComboValve blowdown
Option for 10.5 CF (30" dia.) blast pot & hopper